



Virginia Healthcare Workforce Briefs

Indicators from the Bureau of Labor Statistics'
Current Employment Statistics Survey
Series 1: State & National Employment

Series 1, Issue 141

December 2023

Inside this Brief:

HC&SA Employment	2
HC&SA Employment Growth	2
Total Nonfarm Payroll	3
Total Nonfarm Payroll Growth	3
About the Data	4

Data in the report are seasonally adjusted. Self-employed persons, including health professionals in private practice, are not included.

Highlights

- ◆ Virginia's Health Care & Social Assistance (HC&SA) sector enjoyed its thirteenth consecutive month of positive employment growth after creating 1,600 new jobs in November, which represents a one-month annualized growth rate of 4.0%. HC&SA employment in the state has grown at an even faster 5.1% annualized rate over the past three months.
- ◆ The national HC&SA sector experienced its largest monthly employment gain since August after producing 93,200 new jobs across the country in November. This increase in national HC&SA employment represents a one-month annualized growth rate of 5.3%.
- ◆ Virginia's overall economy enjoyed solid job growth in November as the state's total nonfarm payroll employment increased by 6,200 during the month. This gain translates into a one-month annualized employment growth rate of 1.8%.
- ◆ The overall national economy created 199,000 new jobs in November, a gain that represents a one-month annualized employment growth rate of 1.5%. The overall national economy has enjoyed even faster long-term job growth thanks to its current 12-month employment growth rate of 1.8%.

Data in Brief

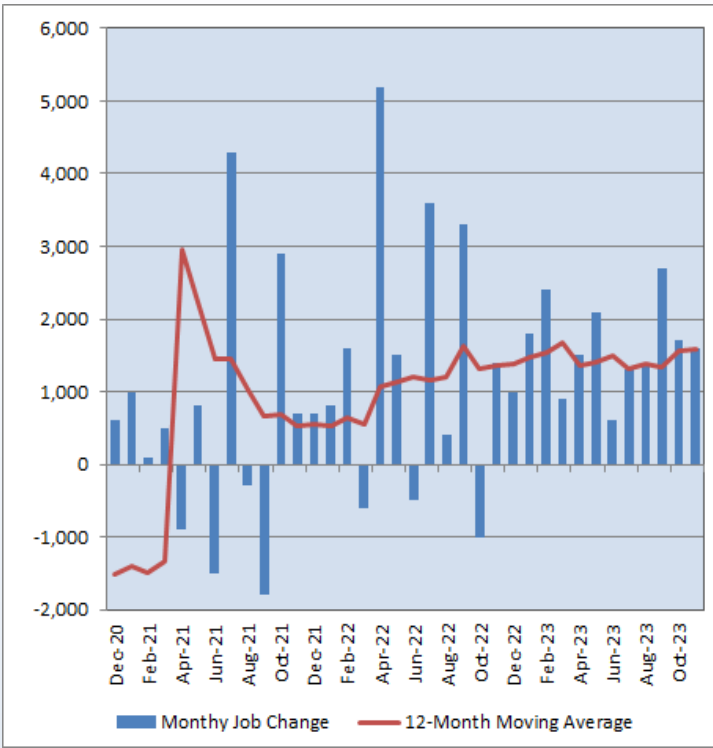
Seasonally Adjusted*	Employment, in Thousands				Growth Rate, Annualized		
	Nov. 2022	Aug. 2023	Oct. 2023	Nov. 2023	12 Month	3 Month	1 Month
Nonfarm, Total							
Virginia	4,108.3	4,157.8	4,166.2	4,172.4	1.6%	1.4%	1.8%
National	154,296.0	156,476.0	156,888.0	157,087.0	1.8%	1.6%	1.5%
Health Care & Social Assistance							
Virginia	465.9	478.9	483.3	484.9	4.1%	5.1%	4.0%
National	20,897.1	21,582.5	21,743.2	21,836.4	4.5%	4.8%	5.3%
All Other Nonfarm							
Virginia	3,642.4	3,678.9	3,682.9	3,687.5	1.2%	0.9%	1.5%
National	133,398.9	134,893.5	135,144.8	135,250.6	1.4%	1.1%	0.9%

Preliminary estimates are italicized

* Seasonally adjusted data are adjusted by the Bureau of Labor Statistics to account for weather, holidays and other seasonal changes. Economists use seasonally adjusted data to reveal underlying trends over time. This series uses seasonally adjusted data exclusively. When comparing data in this series to other HWDC series, or publications from other sources, it is important to note whether the data reported have been seasonally adjusted.

HC&SA Employment

Figure 1: Monthly Change in Employment in Virginia’s Health Care & Social Assistance Sector, Seasonally Adjusted.



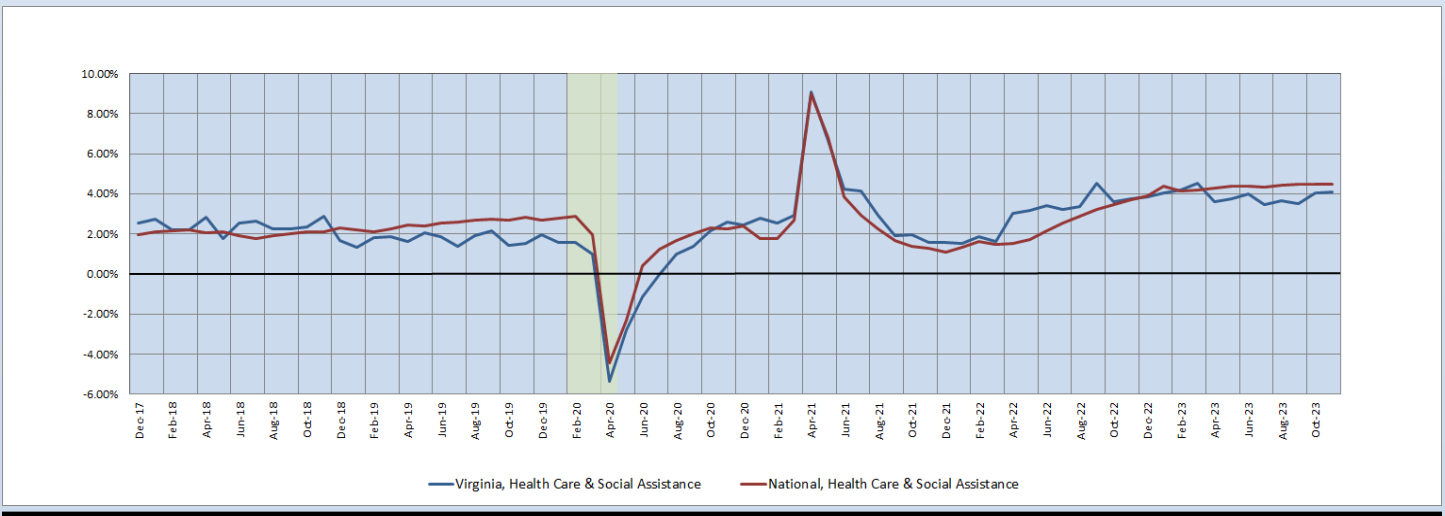
According to the preliminary data released on Friday, December 22, 2023, by the U.S. Department of Labor, Bureau of Labor Statistics, Virginia’s Health Care & Social Assistance (HC&SA) sector enjoyed another strong month of employment growth after creating 1,600 new jobs in November. This increase in Virginia’s HC&SA employment represents a one-month annualized growth rate of 4.0%. Virginia’s HC&SA sector has now increased employment in each of the past 13 months. Furthermore, the magnitude of these gains has been quite impressive: In 11 of these past 13 months, employment in Virginia’s HC&SA sector has increased by at least 1,000.

Meanwhile, the national HC&SA sector experienced stronger employment growth in November thanks to the creation of 93,200 new jobs across the country during the month. This gain represents a one-month annualized employment growth rate of 5.3%. In addition, this gain also represents the largest monthly employment gain in the national HC&SA sector since August. With this gain, the national HC&SA sector has now enjoyed 22 consecutive months of positive employment growth.

Long-Term HC&SA Employment Growth

November was characterized by incremental increases in the respective 12-month HC&SA employment growth rate moving averages of both Virginia and the nation as a whole. Virginia’s HC&SA sector saw its 12-month employment growth rate moving average inch upward from 4.06% to 4.09%. This represents the first time since Q1 2023 in which Virginia’s 12-month HC&SA employment growth rate moving average has remained above 4% in consecutive months. As for the national HC&SA sector, its 12-month employment growth rate moving average drifted upward as well from 4.46% to 4.50% in November. This represents the highest 12-month employment growth rate moving average for the national HC&SA sector in two-and-a-half years.

Figure 2: 12-Month Moving Average, HC&SA Employment Growth, Seasonally Adjusted

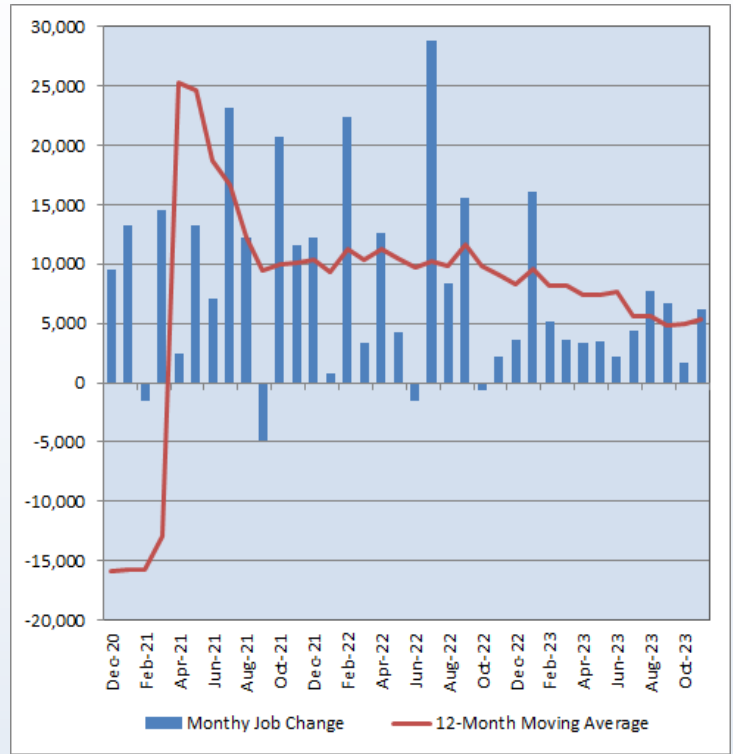


Total Nonfarm Payroll Employment

Virginia’s HC&SA sector was responsible for just over one-quarter of this month’s total statewide employment gain as Virginia’s total nonfarm payroll employment increased by 6,200 in November. This increase in Virginia’s total nonfarm payroll employment represents a one-month annualized growth rate of 1.8%. This gain also represents a marked improvement in Virginia’s overall job market when compared to the 1,700 jobs created across the state in October. As with Virginia’s HC&SA sector, the state’s overall economy has now increased employment for 13 consecutive months.

Virginia’s statewide job market increased employment at an above-average rate in November as the overall national economy created 199,000 new jobs during the month, which translates into a 1.5% annualized growth rate. Although the overall national economy continues to enjoy positive job growth on a monthly basis, November’s gain represents the fourth time this year in which national total nonfarm payroll employment has increased by less than 200,000. In 2021 and 2022, the overall national economy never experienced a single month in which fewer than 200,000 jobs were created across the country.

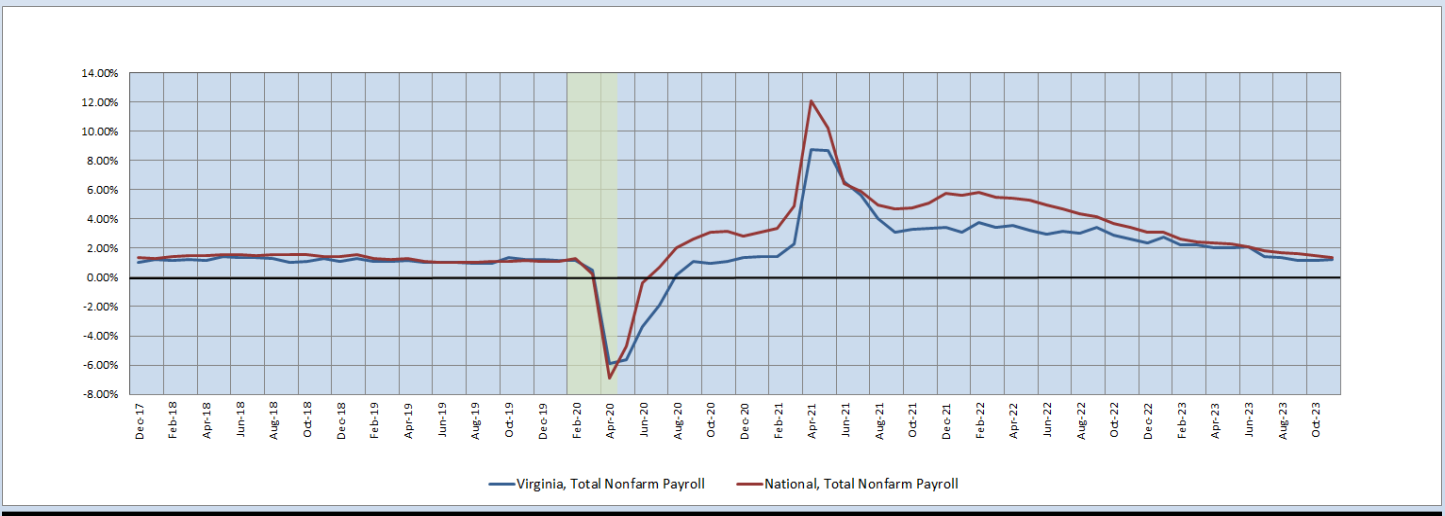
Figure 3: Monthly Change in Employment in Virginia’s Total Nonfarm Payroll, Seasonally Adjusted



Long-Term Total Nonfarm Payroll Employment Growth

Virginia’s overall economy saw its 12-month employment growth rate moving average increase slightly in November from 1.14% to 1.25%. Although this increase did little to arrest the long-term downward trend in the 12-month moving average of Virginia’s total nonfarm payroll employment growth, which has fallen by more than half since the beginning of the year, it has still reached its highest value since August. This increase is even more notable given the continued decline in the comparable moving average for the overall national economy. In November, the 12-month moving average of national total nonfarm payroll employment growth fell from 1.47% to 1.39%. This represents the lowest value for the 12-month employment growth rate moving average of the overall national economy in more than three years.

Figure 4: 12-Month Moving Average, Total Nonfarm Payroll Employment Growth, Seasonally Adjusted



**Healthcare Workforce
Data Center**

Perimeter Center
9960 Mayland Drive, Suite 300
Henrico, VA 23233-1463

Phone: (804) 597-4213
Fax: (804) 527-4434
E-mail: hwdc@dhp.virginia.gov
Website: [www.dhp.virginia.gov/PublicResources/
HealthcareWorkforceDataCenter/](http://www.dhp.virginia.gov/PublicResources/HealthcareWorkforceDataCenter/)

HWDC Staff:

Yetty Shobo, PhD <i>Director</i>	Barbara Hodgdon, PhD <i>Deputy Director</i>
Rajana Siva, MBA <i>Data Analyst</i>	Christopher Coyle, BA <i>Research Assistant</i>

Follow us on . . .

Tumblr: <http://vahwdc.tumblr.com/>

The Department of Health Professions' Healthcare Workforce Data Center works to improve the data collection and measurement of Virginia's healthcare workforce through regular assessment of workforce supply and demand issues among the 80 professions and 350,000 practitioners licensed in Virginia by the DHP.

The HWDC collects data on Virginia's licensed health professionals through surveys completed during the online license renewal and application process. Survey results and data may be accessed on our website: [www.dhp.virginia.gov/
PublicResources/HealthcareWorkforceDataCenter/](http://www.dhp.virginia.gov/PublicResources/HealthcareWorkforceDataCenter/).

The HWDC also provides a series of Virginia Healthcare Workforce Briefs based on data collected by the U.S. Department of Labor's Bureau of Labor Statistics and the U.S. Department of Commerce's Bureau of Economic Analysis.

Virginia Healthcare Workforce Briefs:

Series 1: State & National Employment (Monthly)

Series 2: Virginia Regional & Sectoral Employment (Monthly)

Series 3: Income & Compensation (Quarterly)

About the Data

Data in this report are from the U.S. Department of Labor, Bureau of Labor Statistics' Current Employment Statistics program. The CES program surveys about 143,000 businesses and government agencies monthly. Unless otherwise noted, this series uses seasonally-adjusted data that removes seasonal variations related to weather, holidays, weekends, seasons and other predictable variations. This allows us to better examine underlying trends in the labor market. Data from recent months are preliminary and subject to revision in future releases from the CES. Revisions will be reported in future editions of this series. Unless otherwise noted, the CES data presented in this series:

Includes:

- ◆ Data on employed individuals drawing a paycheck (payroll employees).
- ◆ All employees, regardless of role, occupation or hours worked.
- ◆ HC&SA employees in the private sector only.
- ◆ Persons employed by health professionals in private practice.
- ◆ Both government and private sector workers in nonfarm employment data.

Does not include:

- ◆ Self-employed workers or volunteers, including health professionals in private practice.
 - ◆ HC&SA employees in the public sector (These are counted as government workers in monthly reports).
 - ◆ Information on hours worked or the quality of employment.
 - ◆ Government workers in HC&SA level data (Government workers, regardless of occupation and role, are classified as public sector employees).
-